

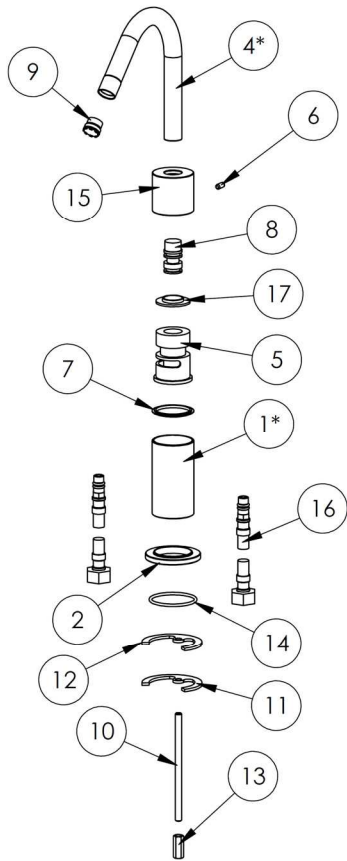
# WATERMARK

MADE IN BROOKLYN, NEW YORK

## 22-1.10\_ Method of Operation



### Specifications:



ITEM NO.	PART NUMBER	QTY.
1*	22-1.1 POST	1
2	22-7.3 BASE	1
4*	22-1.1 SPT	1
5	22-1.1-HNDL-ADAP	1
6	SSFLATSLT 0.19-32x0.44-N	1
7	22-1.1-HNDL-SPCR	1
8	22-1.1-SPT-ADAP	1
9	PCA Cache Aerator - TT	1
10	SPT-MNTNG-KIT-1-SCRW	1
11	SPT-MNTNG-KIT-1-WSHR	1
12	SPT-MNTNG-KIT-1-RBBR-WSHR	1
13	SPT-MNTNG-KIT-1-NUT	1
14	AS568 - 131	1
15A/15B	22-1.1 HANDLE	1
16	SPPLY-HOSE	2
17	22-1.1-HNDL-SPCR-TOP	1

\*Part will vary based on customer preference

NOTE: Spout shown is 1.103

TIA = Handle (15) and end cap of spout (4) will be knurled  
TIB = Handle (15) and end cap of spout (4) will be smooth

Model No.	Dimensions (in.) CTC, Height	Surface Finish
22-1.101-__	5 ½, 8 7/8	Knurl or Smooth
22-1.102-__	7 ½, 12 3/4	Knurl or Smooth
22-1.103-__	5 ½, 9 7/8	Knurl or Smooth
22-1.101X-__	5 ½, 12 ½	Knurl or Smooth
22-1.102X-__	7 ½, 16 ½	Knurl or Smooth

Model No.	Dimensions (in.) CTC, Height	Surface Finish
22-1.103X-__	5 ½, 13 5/8	Knurl or Smooth
22-1.104X-__	5 ½, 17 ½	Knurl or Smooth
22-1.105X-__	7 ½, 19 3/4	Knurl or Smooth
22-1.106X-__	5 ½, 16 5/8	Knurl or Smooth

### **IMPORTANT INSTALLATION INFORMATION**

- USE TEFLON TAPE OR PIPE SEALANT FOR THREADED CONNECTIONS
- DO NOT USE PLUMBER'S PUTTY ON ANY OF THE BRASS COMPONENTS  
This will cause the finish to tarnish and void the warranty. A non-corrosive Alkoxy Silicone is recommended.
- DURING SWEATING OF LINES DO NOT OVERHEAT CASTING  
Overheating may cause damage to internal mechanism
- COPPER ADAPTORS MAY BE REQUIRED TO COMPLETE YOUR INSTALLATION

**For technical support, please call 718-257-2800**